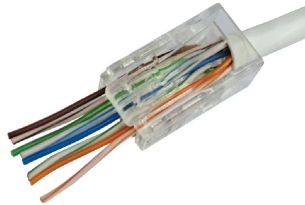


## CAT6 PLUG Pass

RJ45 connectors



Unshielded 8-pin **RJ-45CAT 6 passthrough PLUG plug** for connecting cables and making patch cords.

### Technical Chars

- RJ-45 UTP Category 6 passthrough plug
- 750 insertions guaranteed
- Maximum insertion force 20N
- ATM 1200; 1000BASE-T (Gigabit Ethernet); 1G FCBASE-T
- Easy to mount

CAT6 PLUG Pass		
Code		287709
Connector	CAT 6 RJ45 feed-through	
Colour		Transparent
Total mating force	< 20N	
Insertion-extraction life		> 750
Max. speed	ATM 1200; 1000BASE-T (Gigabit Ethernet); 1G FCBASE-T	
Dielectric withstanding voltage		< 125 Vac (1000 Vac for 1 min)
DC pass	A	1.5 @25°C
Contact resistance	mOhm	20
Insulation resistance	MOhm	500
Impedence	Ohm	< 0.1
Conformity	ROHS and REACH	
Operating temperature	°C	-25 to +55
Dimensions and packaging		
Packing		Plastic container
Pieces	100	
EAN code		8016978107681
Packaging dimensions	mm	85 x 85 x 100

